



Design tiles and planks

Connected to your life aspirations

Gerflor[®]

**Europäischer
LVT Hersteller
seit 1985**

European LVT
manufacturer
since 1985



**Eigenes Designstudio
> Exklusive Dessins**
Internal Design Center
> Exclusive designs



**4 LVT Produktionen
> Hersteller**
4 LVT Factories
> Manufacturer



**12 Logistik-Hubs
> Zentrallager
in Deutschland**
12 Logistics Hubs
> Stock in Europe

**Gerflor
The Reference**



Exclusive by Gerflor

2 Verlegesysteme
2 Produkte
2 Technologies
2 Products

All in 1



**Virtuo 55 Rigid Acoustic
Virtuo 30 Rigid Acoustic**

- **Stabiler Designboden mit Lock-Verriegelungssystem**
- **Ideal für die Renovierung, mit integriertem Akustikrücken**
- **Beste Performance und zusätzlich 30 % leichter als ein Standard-Rigid-Vinyl**
- **Trittschalldämmung 21 dB**

- Choose the best decor according to your life aspirations
- Integrated acoustic backing : ideal product solution for heavy renovation
- 30% lighter than standard rigid with still the best performances
- Acoustic insulation 21 dB



KERAMISCHE FLIESEN / CERAMIC



Verlegevideo / Installation video



**Virtuo 55
Virtuo 30**

- **Designboden zum Verkleben**
- **Mix & Match, frei kombinierbar**
- **Ideal für den Neubau**

- Wood, mineral, stone... choose your way of living
- Mix & Match possibilities
- Ideal product solution for new build



EBENER UNTERGRUND / LEVELLED SURFACE



Verlegevideo / Installation video



Ohne Klebstoff - Verlegung auf Gerflor Smart Fix 16 dB
Think about Gerflor Smart Fix 16 dB

Nutzen Sie / Please use

QR CODES

- Raumplaner
- Produkte
- Interior Designer
- Product pages

5 Dekore erhältlich als:
decors available:



**HB 55
DB & RIGID AC***
Herringbone
Fischgrät

32 Dekore erhältlich als:
decors available:



**RIGID AC
55 & 30**
Rigid Acoustic



DB 55 & 30
Dry Back
Zum Verkleben

10 Dekore erhältlich als:
decors available:



EIR*
Emboss In Register
Dekorsynchrone
Oberflächenprägung

*** Bitte beachten Sie die gesonderte Preisstellung bei den ultrarealistischen Oberflächenprägungen (EIR) und den Fischgrät-Dekoren.**
Please note the separate pricing for the ultra-realistic surface embossing (EIR) and herringbone decors.

Produktübersicht
Product overview

Virtuo, eine Referenz in puncto Nachhaltigkeit

Virtuo, the reference in sustainability



Reduzierter CO₂-Fußabdruck

- Produktionsstandorte in Europa
- Hohe Standards ISO 14001 (Umwelt) und ISO 50001 (Energie)
- Einsatz erneuerbarer Energien

Carbon footprint

- Manufacturing Footprint in Europe
- ISO14001 & 50001 certifications
- Renewable energy



100 % recycelbare Produkte

- Eigene Recyclingcenter
- Verlegesysteme ohne Klebstoff
- Verpackungen aus 100 % Recyclingpapier

100% recyclable

- Up to 35% of recycled content
- Adhesive Free solutions
- Packaging using 100% recycled cardboard

We **care** / We **act**



Die positiven Ökobilanzen unserer Produkte werden unabhängig überprüft und in den Environmental Product Declarations (EPDs) transparent ausgewiesen.

Third-party verified life cycle analysis of our products can be found in their Environmental Product Declaration (EPD)

Warum ist die Entscheidung für Virtuo eine besonders nachhaltige Wahl?

Why choosing Virtuo is an eco-responsible choice?

- Sie entscheiden sich für ein Produkt mit einem bereits hohen Recyclinganteil (bis zu 35 %), welches zudem mit weniger Rohstoffeinsatz produziert wird (30 % leichter).
- Nachhaltigkeit beginnt mit einer möglichst langen Nutzungsdauer - unsere besonders strapazierfähigen Bodenbeläge halten durchschnittlich 25 Jahre.
- Sie entscheiden sich für einen Bodenbelag, der besonders leicht zu reinigen und generell schmutzabweisend ist. Die Einsparung von Wasser, chemischen Reinigern und Strom (Staubsauger) schont die Umwelt und verkleinert Ihren CO₂ Fußabdruck.
- Die beste Wahl für eine besonders wohngesunde Raumluft: Virtuo Bodenbeläge sind nahezu emissionsfrei, frei von Formaldehyden, Schwermetallen, Lösungsmitteln und hormonaktiven Substanzen.
- You select a lighter floor covering (meaning that fewer raw materials are used) and a solution containing up to 35% recycled materials.
- Our floors are designed to last for up to 25 years. The longer you keep your floor, the more you will reduce your impact on the environment.
- You select an easy-to-clean floor : Cleaning (water, detergent and electricity for vacuuming) represents 10 to 20% of a floor covering's total carbon footprint when considering all the steps in its lifecycle, from cradle to grave.
- The best choice for healthy room air: Virtuo floors are almost emission-free, free of formaldehyde, heavy metals, solvents and endocrine disruptors.

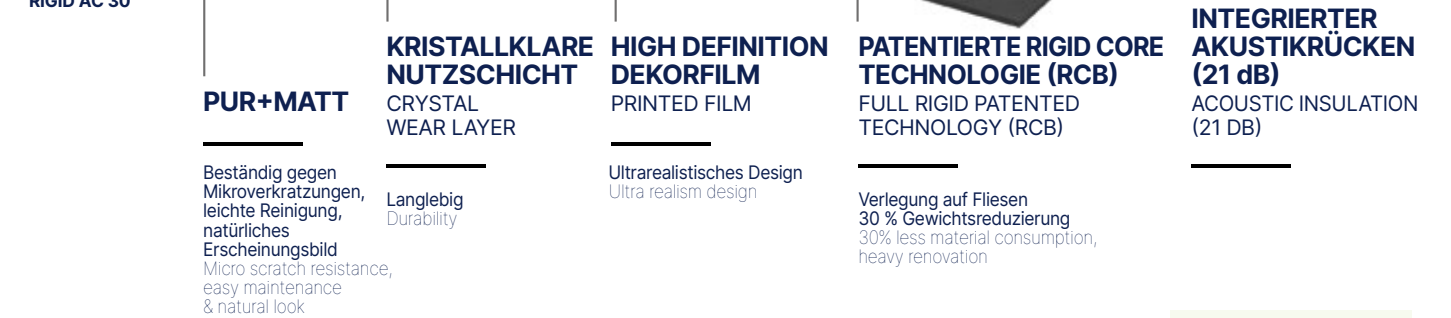
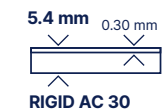
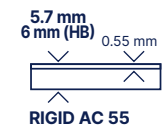


Virtuo 55 & 30 Rigid Acoustic

Formate (mm):

RIGID AC 55 & 30 229x1250 229x1492 399x730

RIGID AC 55 125x750



✓
100 % phthalatfrei
100% Phthalate free

♻️
100 % recycelbar
Bis zu 35 % Recyclinganteil
100% recyclable
Up to 35% recycled content

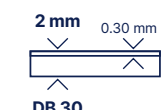
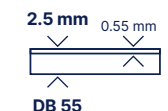
🌿
Nahezu emissionsfrei
(TVOC < 10 µg/m³ nach 28 Tagen)
keine Formaldehyde
TVOC emissions below detection level (tvoc < 10µg/m³ after 28 days)
No formaldehyde

Virtuo 55 & 30

Formate (mm):

DB 55 & 30 184x1219 230x1500 610x610 496x996

DB 55 152x762



✓
100 % phthalatfrei
100% Phthalate free

♻️
100 % recycelbar
Bis zu 35 % Recyclinganteil
100% recyclable
Up to 35% recycled content

🌿
Nahezu emissionsfrei
(TVOC < 10 µg/m³ nach 28 Tagen)
keine Formaldehyde
TVOC emissions below detection level (tvoc < 10µg/m³ after 28 days)
No formaldehyde

FAQ

Ich möchte einen ersten Eindruck der Virtuo Böden in meinem Wohnraum erhalten und dabei verschiedene Dekore miteinander vergleichen.

I'd like a clearer idea by adding examples of Virtuo floors to a photo of my room.

Mit dem Gerflor Raumplaner integrieren Sie Ihren Wunschboden mit nur wenigen Klicks in Echtzeit in Ihr Foto und wählen die perfekte Farbe für Ihr Zuhause! Einfach ein Bild hochladen und los geht's, natürlich kostenfrei.

With our Interior Designer service, you can test all our floors in your home using a photo of your interior. It's simple, fast and free!



Kann ich meinen Vinylbodenbelag in Feuchträumen (Bad, Küche) verlegen und ist er mit einer Fußbodenheizung kompatibel?

Can I install my floor in a wetroom (bathroom, kitchen) and is it compatible with heated floors?

Alle Virtuo Produkte sind für Feuchträume geeignet. Fußbodenheizungen mit einem Wasserkreislauf sind bis max. 28° C kein Problem, elektrische Fußbodenheizungen sind technisch leider nicht möglich. All the Virtuo products are suitable with wetrooms, water reversible and underfloor heating with circulating water, (max 28°C). Radiant electric underfloor heating is prohibited.

Wie reinige ich meinen Vinylboden?
How to clean my Vinyl floor?

Virtuo Bodenbeläge sind unempfindlich gegen Flecken, so dass keine besondere Reinigung erforderlich ist. Kein intensives Schrubben, keine Einpflege, kein Abschleifen. Staubsaugen und bei Bedarf eine Feuchtreinigung mit Neutralreiniger sind absolut ausreichend. Some water and soap, and that's all! Our floors are immune to stains, so no special cleaning is required (no sanding, dry polishing, etc.). To quickly and easily remove dust, use a broom or vacuum cleaner. When it comes to cleaning, soapy water will more than do the job.

Bitte beachten Sie grundsätzlich die individuelle Reinigungs- und Pflegeanleitung auf unserer Internetseite / Refer to Gerflor Installation and Maintenance guidelines available on Gerflor websites.

Mehr als nur Bodenbelag...

More than a floor...

Sockelleisten / Design skirting

Farblich passend / Design matching



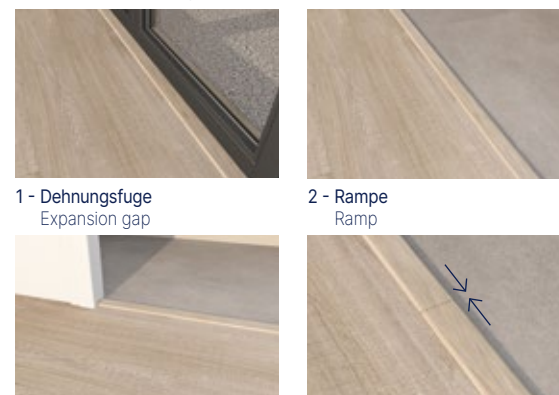
Vinyl Skirting: 6086 + Color code - Format: 60 mm x 2 lm - Packaging: 6 units = 12 lm
MDF Skirting: 5947 + Color code - Format: 60 mm x 2.2 lm - Packaging: 5 units = 11 lm
Bitte entnehmen Sie die Artikelnummer der Produktübersicht
Please refer to the product overview

Übergangprofil / Design coverstrip

Farblich passend / Design matching

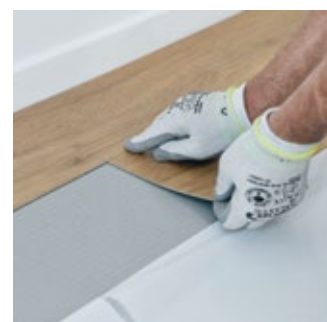


Vier Einsatzbereiche / 4 uses



Code: 0642 + Color code - Format: 37 mm x 930 mm
Bitte entnehmen Sie die Artikelnummer der Produktübersicht
Please refer to the product overview

Dämmunterlage / Underlayer



Gerflor Smart Fix 16 dB
Code: 1698
Format: 1 m x 7.5 lm
Kombinierbar mit Virtuo 55 & 30
Can be combined with Virtuo 55 & 30

Virtuo	55 Rigid Acoustic	30 Rigid Acoustic	55 Dry Back	30 Dry Back	55 HB Rigid Acoustic	55 HB Dry Back	Vinyl Sockelleisten PVC Skirting	MDF Sockelleisten MDF Skirting	Übergangprofil Coverstrip Farblich passend
Color Design									
Acuarela Ink	39071475 399 x 730	39101475 399 x 730	39021475 496 x 996	39181475 457 x 914			6086S196	5947S196	0642C018
Acuarela Taupe	39071476 399 x 730	39101476 399 x 730	39021476 496 x 996	39181476 457 x 914			6086S197	5947S197	0642C019
Baita Blond	39091023 229 x 1492	39141023 229 x 1492	36131023 230 x 1500	39191023 230 x 1500			6086S081	5947S081	0642C002
Baita Medium	39091025 229 x 1492	39141025 229 x 1492	36131025 230 x 1500	39191025 230 x 1500			6086S082	5947S082	0642C006
Baita Taupe	39091026 229 x 1492	39141026 229 x 1492	36131026 230 x 1500	39191026 230 x 1500			6086S079	5947S079	0642C013
Blomma Beige*	39061460 229 x 1492	39131460 229 x 1492	38981460 230 x 1500	39001461 230 x 1500	39041460 125 x 750	39201460 152 x 762	6086S168	5947S168	0642C006
Blomma Brown*	39061461 229 x 1492	39131461 229 x 1492	38981461 230 x 1500	39001461 230 x 1500			6086S194	5947S194	0642C007
Blomma Clear*	39061462 229 x 1492	39131462 229 x 1492	38981462 230 x 1500	39001462 230 x 1500			6086S168	5947S168	0642C006
Blomma Cream*	39061463 229 x 1492	39131463 229 x 1492	38981463 230 x 1500	39001463 230 x 1500	39041463 125 x 750	39201463 152 x 762	6086S193	5947S193	0642C005
Blomma Light*	39061464 229 x 1492	39131464 229 x 1492	38981464 230 x 1500	39001464 230 x 1500	39041464 125 x 750	39201464 152 x 762	6086S188	5947S188	0642C005
Blomma Natural*	39061465 229 x 1492	39131465 229 x 1492	38981465 230 x 1500	39001465 230 x 1500	39041465 125 x 750	39201465 152 x 762	6086S016	5947S016	0642C004
Bohem Beige*	39081456 229 x 1250	39111456 229 x 1250	38971456 184 x 1219	38991456 184 x 1219			6086S193	5947S193	0642C005
Bohem Dark Grey*	39081457 229 x 1250	39111457 229 x 1250	38971457 184 x 1219	38991457 184 x 1219			6086S120	5947S120	0642C010
Bohem Honey*	39081458 229 x 1250	39111458 229 x 1250	38971458 184 x 1219	38991458 184 x 1219			6086S189	5947S189	0642C008
Bohem Light Grey*	39081459 229 x 1250	39111459 229 x 1250	38971459 184 x 1219	38991459 184 x 1219			6086S195	5947S195	0642C009
Daintree Brown	39091010 229 x 1492	39141010 229 x 1492	36131010 230 x 1500	39191010 230 x 1500			6086S024	5947S024	0642C001
Daintree Honey	39091455 229 x 1492	39141455 229 x 1492	36131455 230 x 1500	39191455 230 x 1500			6086S201	5947S201	0642C003
Daintree Natural	39091454 229 x 1492	39141454 229 x 1492	36131454 230 x 1500	39191454 230 x 1500			6086S025	5947S025	0642C002
Latina Clear	39070990 399 x 730	39100990 399 x 730	36070990 610 x 610	39170990 610 x 610			6086S094	5947S094	0642C017
Latina Dark	39070992 399 x 730	39100992 399 x 730	36070992 610 x 610	39170992 610 x 610			6086S092	5947S092	0642C015
Latina Pearl	39070994 399 x 730	39100994 399 x 730	36070994 610 x 610	39170994 610 x 610			6086S096	5947S096	0642C016
Mikado	39051100 229 x 1250	39121100 229 x 1250	39261100 184 x 1219	39161100 184 x 1219			6086S053	5947S053	0642C014
Qaja Beige	39051473 229 x 1250	39121473 229 x 1250	39261473 184 x 1219	39161473 184 x 1219			6086S201	5947S201	0642C006
Qaja Honey	39051474 229 x 1250	39121474 229 x 1250	39261474 184 x 1219	39161474 184 x 1219			6086S189	5947S189	0642C003
Sakia	39051118 229 x 1250	39121118 229 x 1250	39261118 184 x 1219	39161118 184 x 1219			6086S008	5947S008	0642C008
Sunny Light	39050996 229 x 1250	39120996 229 x 1250	39260996 184 x 1219	39160996 184 x 1219			6086S039	5947S039	0642C011
Sunny Nature*	39050997 229 x 1250	39120997 229 x 1250	39260997 184 x 1219	39160997 184 x 1219	39040997 125 x 750	39200997 152 x 762	6086S106	5947S106	0642C002
Sunny Snow	39051477 229 x 1250	39121477 229 x 1250	39261477 184 x 1219	39161477 184 x 1219			6086S076	5947S076	0642C012
Tavla Beige	39071451 399 x 730	39101451 399 x 730	36071451 610 x 610	39171451 610 x 610			6086S178	5947S178	0642C021
Tavla Clear	39071450 399 x 730	39101450 399 x 730	36071450 610 x 610	39171450 610 x 610			6086S200	5947S200	0642C020
Tavla Dark	39071453 399 x 730	39101453 399 x 730	36071453 610 x 610	39171453 610 x 610			6086S199	5947S199	0642C023
Tavla Green	39071452 399 x 730	39101452 399 x 730	36071452 610 x 610	39171452 610 x 610			6086S198	5947S198	0642C022

S001: Weiß / White

Packaging

Format (mm)	m ² /box	m ² /pallet	Format (mm)	m ² /box	m ² /pallet	Format (mm)	m ² /box	m ² /pallet	Format (mm)	m ² /box	m ² /pallet	Format (mm)	m ² /box	m ² /pallet	Format (mm)	m ² /box	m ² /pallet
Virtuo 55 Rigid Acoustic			Virtuo 30 Rigid Acoustic			Virtuo 55 Dry Back			Virtuo 30 Dry Back			Virtuo 55 HB Rigid Acoustic			Virtuo 55 HB Dry Back		
229 x 1492	2.39	114.72	229 x 1492	2.39	114.72	496 x 996	3.96	213.84	457 x 914	4.60	230.00	125 x 750	1.50	84.00	152 x 762	3.82	213.92
229 x 1250	2.00	96.00	229 x 1250	2.00	96.00	184 x 1219	3.36	215.04	610 x 610	4.83	202.86						
399 x 730	2.04	114.24	399 x 730	2.04	114.24	230 x 1500	3.11	186.60	184 x 1219	4.71	263.76						
						610 x 610	3.35	187.60	230 x 1500	4.49	255.93						
						184 x 1219 (EIR)	3.36	188.16	184 x 1219 (EIR)	3.81	228.60						
						230 x 1500 (EIR)	3.11	186.60	230 x 1500 (EIR)	3.80	228.00						

New Virtuo Connected to different life aspirations



32
DESIGNS

Designs

- Erhältlich als Rigid Acoustic mit Lock-Verriegelungssystem und als Dry Back für eine feste Verklebung
- Available as Rigid Acoustic with clic-system and as Dry Back for glue down installation



100 % recycelbar

- Bis zu 35 % Recyclinganteil
- 100 % recyclable
- Up to 35% recycled content



Beste Raumluftqualität

- Niedrige VOC-Emissionen
- Low VOC emissions
- Indoor air quality : TVOC <10 µg/m³



Komplettlösung

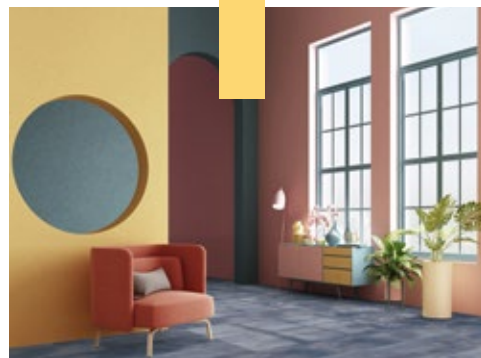
- Dämmunterlagen, farblich passende Sockelleisten und Übergangsprofile
- Complete solution
- Underlayers, matching skirtings and coverstrips

Fünf Trends im Einklang mit neuen Dekoren, zwei Verlegearten je nach Verwendungszweck.

5 trends in line with new decors, 2 installation methods according to your uses.

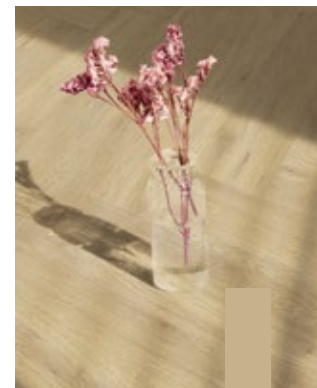
Transparency

The moving light

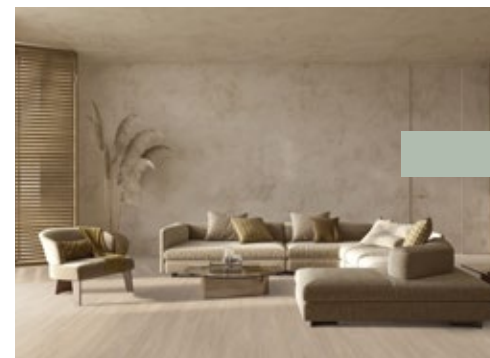


Wählen Sie den für Sie passenden Boden und erschaffen Sie Ihre neue Wohnwelt.

Choose the floor according to your aspirations, which will magnify your interior.



The essentials
Timeless designs



Japandi
Natural Materials bring Purity



Terra Luna
Roundness & wild



Classic Clash
Stone
Mix for a retro style



Lassen Sie sich von unseren Deko-Trends inspirieren

Find out more about the latest trends connected to your life aspirations



1. Wählen Sie Ihren Trend

Choose your trend

2. Entscheiden Sie sich für ein Dekor, das zu Ihrem neuen Einrichtungsstil passt

Select the decor adapted to your new interior ambition

3. Wählen Sie farblich passende Sockelleisten und Übergangsprofile

Select your skirting and coverstrip according to your color choice



Blomma Natural 1465



Sunny Nature 0997

HB 55 RIGID AC 125 × 750 | **HB 55 DB** 152 × 762



Blomma Cream 1463

HB 55 RIGID AC 125 × 750 | **HB 55 DB** 152 × 762



Blomma Light 1464

HB 55 RIGID AC 125 × 750 | **HB 55 DB** 152 × 762



Blomma Beige 1460

HB 55 RIGID AC 125 × 750 | **HB 55 DB** 152 × 762



Blomma Natural 1465

HB 55 RIGID AC 125 × 750 | **HB 55 DB** 152 × 762





Bohem Beige - EIR 1456

RIGID AC 55 & 30 229 × 1250 | **DB 55 & 30** 184 × 1219



Blomma Cream - EIR 1463

RIGID AC 55 & 30 229 × 1492 | **DB 55 & 30** 230 × 1500



Sunny Light 0996

RIGID AC 55 & 30 229 × 1250 | **DB 55 & 30** 184 × 1219



Daintree Natural 1454

RIGID AC 55 & 30 229 × 1492 | **DB 55 & 30** 230 × 1500



Blomma Light - EIR 1464

RIGID AC 55 & 30 229 × 1492 | **DB 55 & 30** 230 × 1500



Blomma Light 1464



Baita Blond 1023



Baita Blond 1023

RIGID AC 55 & 30 229 × 1492 | **DB 55 & 30** 230 × 1500



Qaja Beige 1473

RIGID AC 55 & 30 229 × 1250 | **DB 55 & 30** 184 × 1219



Blomma Beige - EIR 1460

RIGID AC 55 & 30 229 × 1492 | **DB 55 & 30** 230 × 1500



Sunny Nature 0997

RIGID AC 55 & 30 229 × 1250 | **DB 55 & 30** 184 × 1219



Blomma Clear - EIR 1462

RIGID AC 55 & 30 229 × 1492 | **DB 55 & 30** 230 × 1500



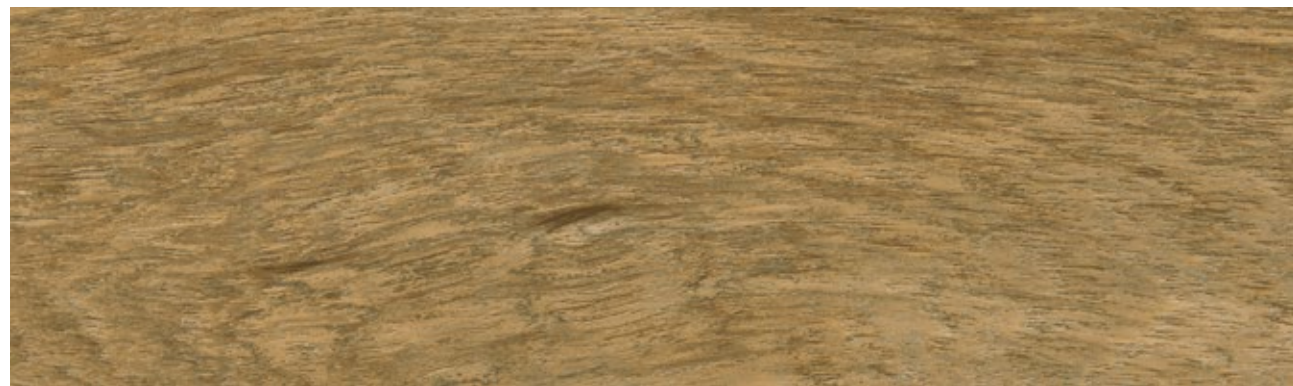
Baita Medium 1025

RIGID AC 55 & 30 229 × 1492 | **DB 55 & 30** 230 × 1500



Bohem Honey - EIR 1458

RIGID AC 55 & 30 229 × 1250 | **DB 55 & 30** 184 × 1219



Qaja Honey 1474

RIGID AC 55 & 30 229 × 1250 | **DB 55 & 30** 184 × 1219



Qaja Honey 1474



Daintree Honey 1455



Sakia 1118

RIGID AC 55 & 30 229 × 1250 | **DB 55 & 30** 184 × 1219



Daintree Honey 1455

RIGID AC 55 & 30 229 × 1492 | **DB 55 & 30** 230 × 1500



Blomma Natural - EIR 1465

RIGID AC 55 & 30 229 × 1492 | **DB 55 & 30** 230 × 1500



Daintree Brown 1010

RIGID AC 55 & 30 229 × 1492 | **DB 55 & 30** 230 × 1500



Blomma Brown - EIR 1461

RIGID AC 55 & 30 229 × 1492 | **DB 55 & 30** 230 × 1500





Sunny Snow 1477

RIGID AC 55 & 30 229 × 1250 | **DB 55 & 30** 184 × 1219



Bohem Light Grey - EIR 1459

RIGID AC 55 & 30 229 × 1250 | **DB 55 & 30** 184 × 1219



Bohem Dark Grey - EIR 1457

RIGID AC 55 & 30 229 × 1250 | **DB 55 & 30** 184 × 1219



Mikado 1100

RIGID AC 55 & 30 229 × 1250 | **DB 55 & 30** 184 × 1219



Baita Taupe 1026

RIGID AC 55 & 30 229 × 1492 | **DB 55 & 30** 230 × 1500



Bohem Light Grey - EIR 1459



Acuarela Ink 1475



Acuarela Taupe 1476

RIGID AC 55 & 30 399 × 730 | **DB 55** 496 × 996 **DB 30** 457 × 914

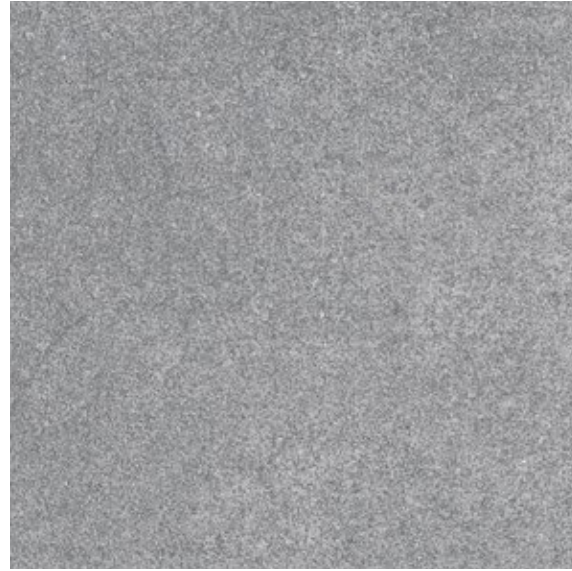


Acuarela Ink 1475

RIGID AC 55 & 30 399 × 730 | **DB 55** 496 × 996 **DB 30** 457 × 914



Latina Clear 0990
RIGID AC 55 & 30 399 x 730
DB 55 & 30 610 x 610



Latina Pearl 0994
RIGID AC 55 & 30 399 x 730
DB 55 & 30 610 x 610



Latina Dark



Latina Dark 0992
RIGID AC 55 & 30 399 x 730
DB 55 & 30 610 x 610

Farbabweichungen sind möglich / Non contractual imagery



Latina Clear 0990



Tavla Beige



Tavla Clear 1450
RIGID AC 55 & 30 399 × 730
DB 55 & 30 610 × 610



Tavla Beige 1451
RIGID AC 55 & 30 399 × 730
DB 55 & 30 610 × 610



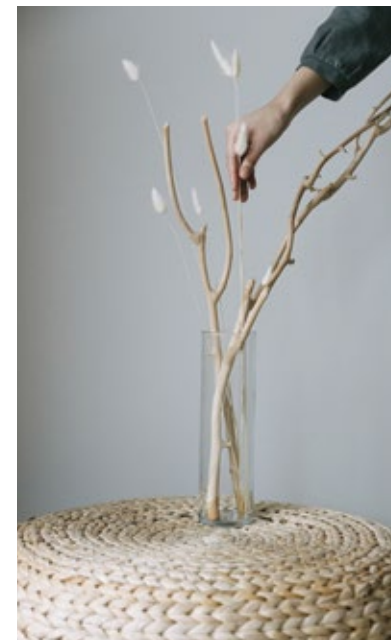
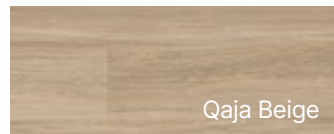
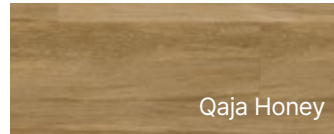
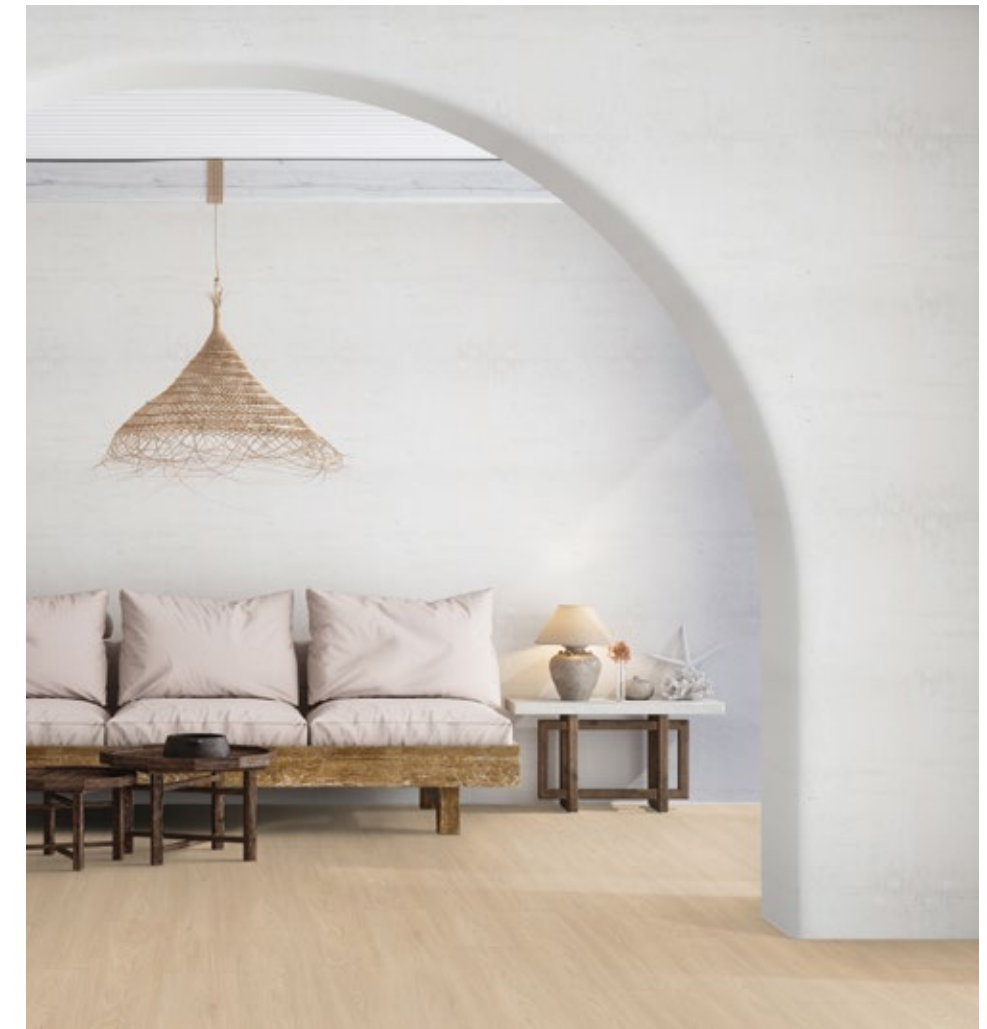
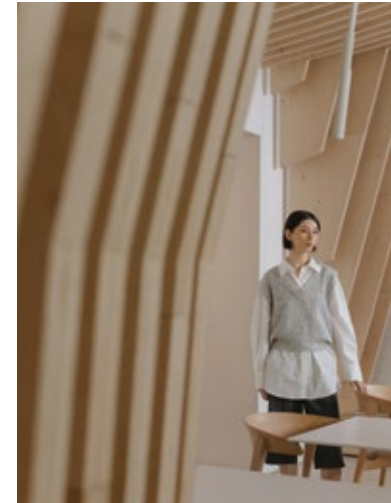
Tavla Green 1452
RIGID AC 55 & 30 399 × 730
DB 55 & 30 610 × 610



Tavla Dark 1453
RIGID AC 55 & 30 399 × 730
DB 55 & 30 610 × 610

Japandi style

Essential interior design based on noble natural materials. The typical sobriety of Scandinavian furniture is combined with the symbolism of the Japanese tradition. Delicate chromatic tones and an obsessive care for selecting and positioning furnishing accessories. Volumes shaped with geometric lines, but made with pure, unpainted solid wood, with stones carved from solid blocks, with blown glass, with forged metal. Quality and comfort as absolute values in contrast to passing fashion. A soft and relaxing atmosphere never affected. Here are the keys to decodify this style that blends, through an acronym, two styles and two geographic areas only apparently distant from each other.



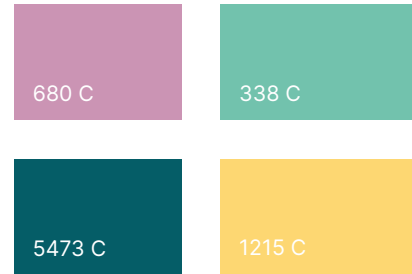
#Simplicity #Purity #Handmade weaving #Meticulous details
#Lightness #Natural Materials #Bold #Solid Wood



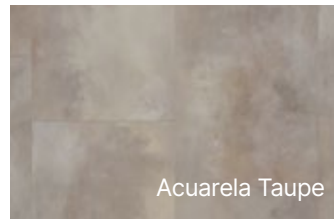
Transparency



The presentation of a new range of plexiglass products has revolutionized the concept of transparency. The possibility of capturing light and reflecting it by altering its colors like a prism, the semi-transparent walls that offer both privacy and the unexpected look beyond the steam, beyond the fog, represent the avant-garde of a very near future in the universe of materials. A play of shadows and lights, of shades of color, of layering in the transparent volume. Color is dared, even where pure, neutral transparency has always been sought.



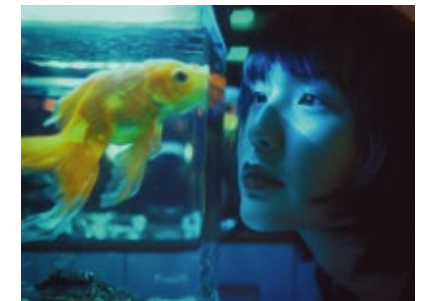
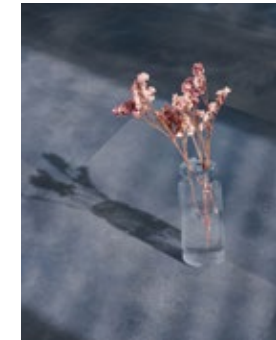
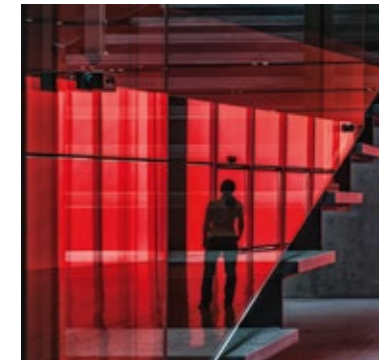
#Tie and Dye #Dégradé #Light
#Plexiglass #Fluid #Liquid #Mother Pearl



Acuarela Taupe



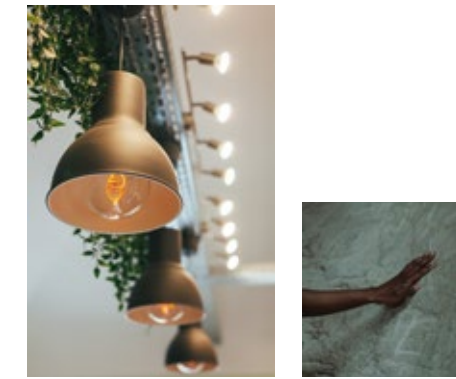
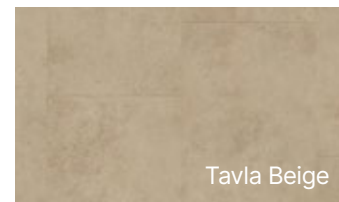
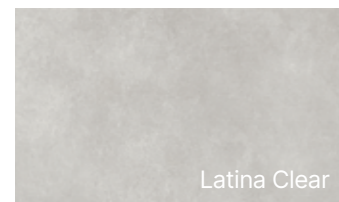
Acuarela Ink



Terra Luna

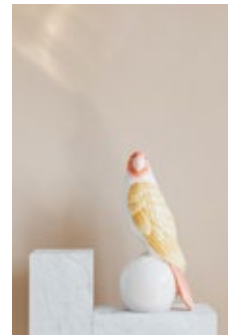
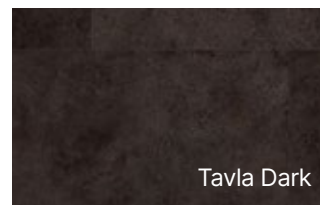
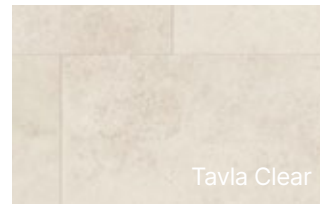
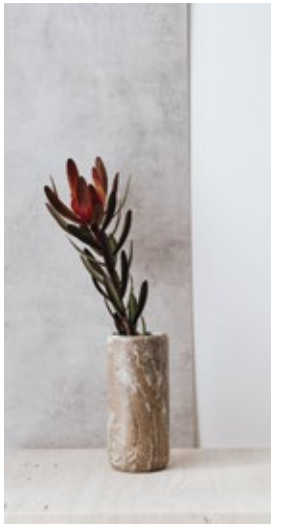
This almost surreal theme represents the meeting point between the earth and the planets. Desert surfaces, carved out, eroded by the wind, apparently empty of life's forms, but rich in minerals with warm and rocky chromatic tones. Terra - Luna describes a brutal environment drawn on volumes and rounded shapes. A universe in which inert raw materials such as plaster, cement, clay, stone reign with a new design approach oriented towards the monolithic solidity of the materials, almost a sort of spontaneous primitive monumental architecture. The tactile dimension is very important for this theme: the very soft three-dimensional volumes correspond to a massive, rough, almost brutal surface.

- #Roundness
- #Oversized
- #Raw Materials
- #Space
- #Primitive Shapes
- #Wild

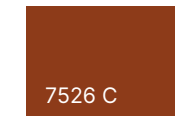
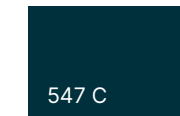
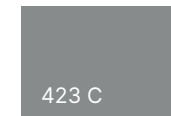
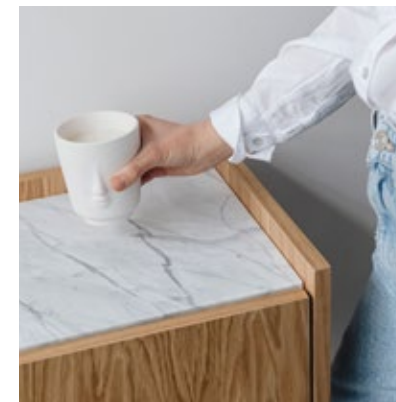
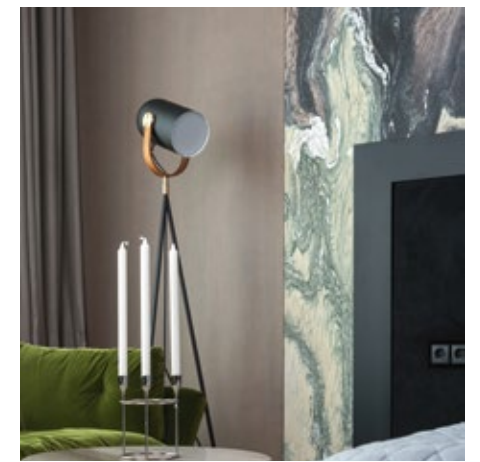


Classic Clash

To describe this theme, we try to offer a new point of view in the use of marble and stone. We want to give a modern interpretation in the application of classic natural surfaces. We seek the evolution of the neo-classical style to which these materials traditionally belong. We witness a strong presence of color for this theme, we dare more, we use together colored marbles and stones with strong contrast in between. This avant-garde brings us a new interpretation that goes beyond the return to Art Decó, particularly strong in recent years, to reinvent the use of marble and stone. A modern creativity that uses marble and stone not with the intention of showing off luxury and opulence, but to amaze by offering new perspectives.



#Marble #Triumph #Stone Mix #Macro Terrazzo
#Timeless Beauty #Retro #Richness



Timeless Designs

It's the best sellers! Why? Because these decors cross all trends and years. It lasts despite your desires to change sofas, tables, chairs..., wall colors or decorative objects. These colors are suitable for all atmospheres, for modern and classic interiors.



#Essential #Modern
#Classic #The Everything



	Virtuo 55 Rigid Acoustic	Virtuo 30 Rigid Acoustic	Virtuo 55	Virtuo 30
Standard	Herringbone			

Beschreibung / Description / Beschrijving / Descripción / Descrição / Descrizione

Gesamtdicke / Total Thickness / Totale dikte / Espesor total / Espessura total / Spessore totale	EN ISO 24346	mm	5.70	6	5.40	2.50	2.00		
Dicke der Nuttschicht / Thickness of the wearlayer / Dikte van de slijtlaag / Espesor capa de uso / Espessura camada de desgaste / Spessore strato di usura	EN ISO 24340	mm	0.55	0.55	0.30	0.55	0.30		
Flächengewicht / Weight / Gewicht / Peso / Peso / Peso	EN ISO 23997	g/m ²	7 000	9 480	6 900	3 850	4 290	3 180	3 580
Format / Size / Afmetingen / Dimensiones / Dimensões / Dimensione	ISO 24342	mm	229 x 1492 229 x 1250 399 x 730	125 x 750	229 x 1492 229 x 1250 399 x 730	152 x 762 496 x 996 184 x 1219	230 x 1500 610 x 610 184 x 1219 (EIR) 230 x 1500 (EIR)	457 x 914 610 x 610 184 x 1219 230 x 1500	184 x 1219 (EIR) 230 x 1500 (EIR)
Planken-/Fliesenanzahl pro Karton / m ² pro Karton - Number of planks or tiles per box / Sqm per box - Aantal tegels/planken per verpakking / aantal m ² per verpakking - Numero doghe/piastre e m ² per scatola - Cantidad de losetas / Caja - Quantidade dosmosaicos / Caixa & m ²	-	-	7 / 2.39 m ² 7 / 2.00 m ² 7 / 2.04 m ²	16 / 1.50 m ²	7 / 2.39 m ² 7 / 2.00 m ² 7 / 2.04 m ²	33 / 3.82 m ² 8 / 3.96 m ² 15 / 3.36 m ²	9 / 3.11 m ² 9 / 3.35 m ² 15 / 3.36 m ² 9 / 3.11 m ²	11 / 4.60 m ² 13 / 4.83 m ² 21 / 4.71 m ² 13 / 4.49 m ²	17 / 3.81 m ² 11 / 3.80 m ²

Klassifikation / Classification / Classificatie / Clasificaciones / Classificações / Classificazioni

Produktnorm / Technische eigenschappen / Norm/Product Specification / Normas / Normas / Norma prodotto	-	-	EN ISO 10582	EN ISO 10582	EN ISO 10582	EN ISO 10582
Europäische Klassifizierung / European Classification / Europese classificatie / Clasificación europea / Classificação Europeia / Europea	EN ISO 10874	class	33 - 42	23 - 31	33 - 42	23 - 31
Brandverhalten / Fire Rating / Brand classificatie / Fuego / Fogo / Reazione al fuoco	EN 13 501-1	class	Bfl-s1	Bfl-s1	Bfl-s1	Bfl-s1
Begehaufadung / Static Electrical Propensity / Elektrische eigenschappen / Comportamiento electrostático / Comportamento electrostático / Resistenza elettrica	EN 1815	kV	< 2	< 2	< 2	< 2
Rutschhemmung / Slip Resistance Wet / Anti-slip / Deslizamiento húmedo / Escorregamento húmido / Scivolosità umida ⁽¹⁾	EN 16165 Anhang B (DIN 51130) / BGR 181	class	R10	R10	R10	R10

Technische Eigenschaften / Performances / Testresultaat / Performance / Cualidades Técnicas / Caratteristiche Tecniche

Verschleißverhalten / Wear Resistance / Slijtvastheid / Abrasión / Abrasão / Resistenza all'abrasione	EN 660.2	mm ³	< 2.0	< 2.0	< 2.0	< 2.0
Verschleißgruppe / Wear Group / Groep slijtvastheid / Grupo de abrasión / Grupo de abrasão / Gruppo di abrasione	QB 30	group	T	T	T	T
Bindemittelgehalt / Type Binder content / Contenido en ligante / Conteúdo em ligante em agent	ISO 10582	group	I	I	I	I
Maßstabilität (Norm) / Dimensional stability (norm) / Maatvastheid (norm) / Estabilidad Dimensional (Exigencia) / Estabilidade dimensional (normalização) / Stabilità dimensionale (requisito normativo)	EN ISO 23999	%	≤ 0.15	≤ 0.15	≤ 0.25	≤ 0.25
Maßstabilität (Durchschnittswert) / Dimensional stability (average measured value) / Maatvastheid (gemeten gemiddelde waarde) / Estabilidad Dimensional (Valor medido) / Estabilidade Dimensional (Valor medio) / Stabilità dimensionale (rilevata)	-	%	≤ 0.10	≤ 0.10	≤ 0.10	≤ 0.10
Resteindruck / Residual Indentation / Indrukbelasting / Punzonamiento / Punçoamento / Impronta	EN ISO 24343-1	mm	≤ 0.10	≤ 0.10	≤ 0.10	≤ 0.10
Trittschallverbesserungsmaß / Impact sound insulation / Geluidsisolatie / Acústica / Isolamento acústico	EN ISO 717-2	dB	21	21	4	4
Raumschall / Room Impact / Loopgeluid / Rumore al calpestio / Sonoridad en la pisada / Sonoridade ao andar	NF S 31074	dB	79	79	77	77
Stuhllastprüfung, TYP W / Castor chair test / Rolweerstand bureaustoelen / Determinación del efecto de una silla con ruedas / Resistência a cadeiras de rodas / Resistenza al passaggio di sed	ISO 4918	-	OK	OK	OK	OK
Wärmeleitfähigkeit / Thermal Conductivity / Thermische weerstand / Conductividad térmica / Contutividade térmica / Resistenza termica / Värmeledningsmotstånd / Varmemotstånd	EN ISO 10456	W/(m.K)	0.25	0.25	0.25	0.25
Lichtechtheit / Colour Fastness / Lichtechtheid / Resistencia a la luz / Estabilidade das cores / Solidità alla luce	EN ISO 105 - B02	degree	≥ 6	≥ 6	≥ 6	≥ 6
Oberflächenvergütung / Surface Treatment / Oppervlaktebehandling / Tratamiento de superficie / Trattamento di superficie	-	-	PUR+MATT	PUR+MATT	PUR+MATT	PUR+MATT
Verhalten gegenüber Chemikalien ⁽²⁾ / Chemical Products Resistance / Chemische bestandigheid / Resistencia a los productos químicos / Resistência aos produtos químicos / Resistenza ai prodotti chimici	EN ISO 26987	-	Excellent	Excellent	Excellent	Excellent

Umwelt/Raumluftqualität / Environment/Indoor Air Quality / Ambiente/Qualidade Do Ar Interoirenvionnement/ Medio Ambiente/Calidad Interior Del Aire Interior / Meioambiente/Qualidade Do Ar Interior

TVOC (28 Tage) / TVOC after 28 days / TVOC (28 dagen) / TVOC (28 dias) / TVOC (28 dias) / TVOC (28 giorni) / TVOC (28 dagar) / TVOC (28 dager)	ISO 16000-6	micrograms /m ³	< 10	< 10	< 10	< 10
--	-------------	----------------------------	------	------	------	------

CE Kennzeichnung / CE Marking / Eg_conformiteitsmerk / Marca De Conformidad CE / Marca De Conformidade CE / Marcatura CE Di Conformita

	EN 14041	-				
--	----------	---	--	--	--	--

- (1) Schiefe Ebene / Ramp test with oil
 (2) Beständig gegenüber nicht färbenden alkoholhaltigen Handdesinfektionsmitteln, Haushaltschemikalien und verdünnten Säuren und Laugen bei kurzzeitiger Einwirkung.

IMPORTANT: The information contained in this document is valid from 01/02/2023 and is subject to change at any time without notice. In the context of constantly changing technology, our customers are responsible, prior to any use, for checking with us that this document is the version in force.


We care / we act Our Commitments for a Sustainable future

CARBON FOOTPRINT
 -20 % kg CO₂ equivalent/m² between 2020 and 2025

BIOSOURCED CONTENT
 10 % by 2025

RECYCLED CONTENT
 30 % by 2025

ADHESIVE FREE
 35 % by 2025

ANNUAL VOLUME RECYCLED
 60 000 t by 2025

* Scopes 1 and 2 defined in the GHG protocol ** % of activity with biosourced materials *** % of activity - adhesive free solution